

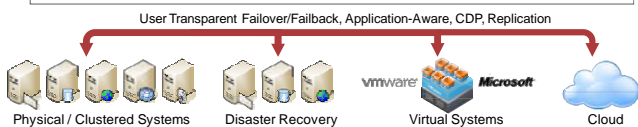
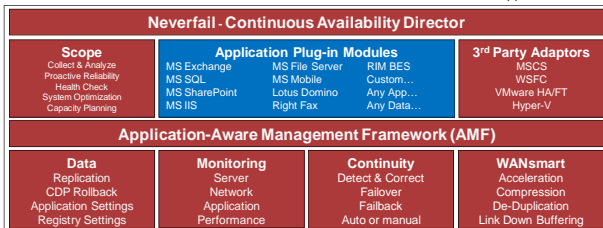
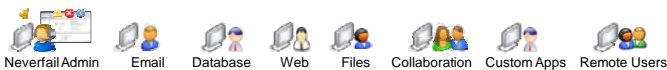
## Continuous Availability Director Business-Centric Management & Protection for Business Applications

Eliminating down time for your end-users, business-critical applications and IT services requires that all of the key underlying servers, that are required to deliver the service, be fully managed and protected.

However, fully managing and protecting your business-critical applications and IT services can be a complex and time consuming task, as each server must be managed and protected independently.

### Introducing Neverfail's Continuous Availability Director

Neverfail's Continuous Availability Director solves this problem by providing you with a single point of management and control, that protects your business-critical applications and assures service levels, across multiple IT services.



### Business-Centric Management and Protection

Neverfail's Continuous Availability Director also provides an enterprise-wide, business-centric view, of your business-critical applications and IT services.

Now, for the first time, you can logically group and view the availability of your business-critical systems, applications and servers, in a business-centric manner (Figure 1.) using criteria such as:

- Business System (SharePoint, Mobile messaging etc.)
- Business Process (Manufacturing, Quality Assurance etc.)
- Business Service (Accounting, Payroll processing etc.)
- Organizational Structure (Paris office, Finance Dept etc.)

### Why Neverfail Continuous Availability Director

- ▶ Provides a single point of management, control and protection for Business-Critical applications and IT services
- ▶ Provides a Business-Centric view of Business-Critical applications, servers, IT services and their interdependencies
- ▶ Significantly reduces the ongoing management burden of protecting Business-Critical Applications, by providing centralized, monitoring, management and configuration
- ▶ Simplifies and expedites root cause analysis, across multiple systems, applications, services, office locations etc.

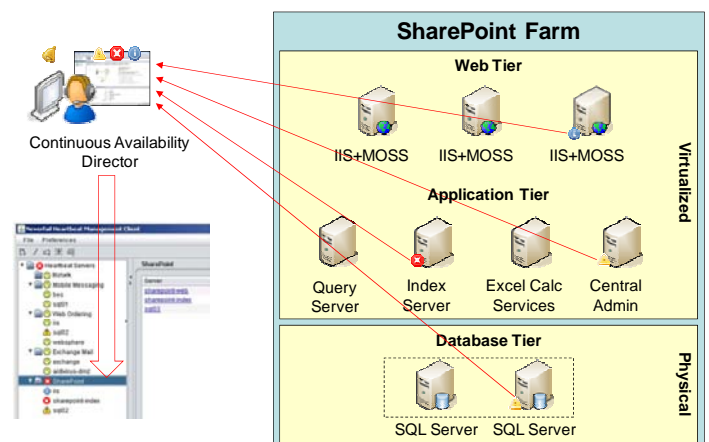
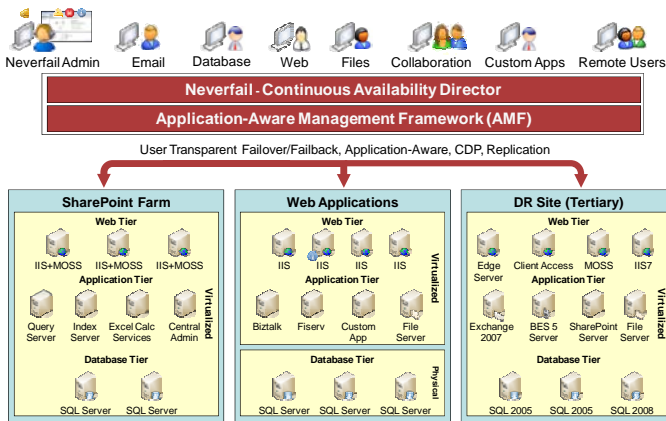


Figure 1. Viewing Availability by Business System (SharePoint Farm)

### Business-Centric Management and Protection

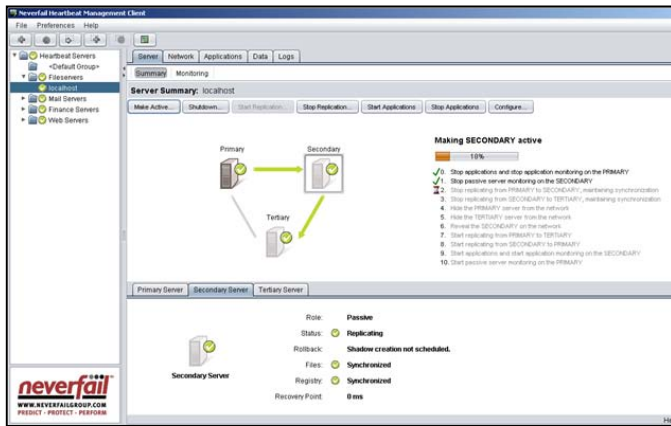
The Neverfail Continuous Availability Director user interface also provides an invaluable insight into the interdependencies that exist, between the various business systems, underlying application servers and organizational structures.

## Business-Centric Management and Protection



Business System, application and organizational interdependencies

In addition, the Continuous Availability Director also provides a real-time, detailed graphical representation of Business-Critical system switchover, failover status and progress.



Graphical representation of system failover, status, progress etc.

## Summary

In today's world, business-critical systems and applications cannot exist in vacuums. By providing a complete, centralized view of each piece in the continuous availability puzzle, Neverfail's Continuous Availability Director provides the unifying element that ensures end-user and business-critical application down time are a thing of the past.

## Supported Operating Systems

### Microsoft

- Windows Server 2003 SP1/SP2 (x86 & x64)
- Windows Server 2008 SP1/SP2 (x86 & x64)
- Windows Server 2008 R2 (x64)

## Supported Virtualization Platforms

### Microsoft

- Hyper-V

### VMware

- ESX 3.x & vSphere 4.x

### Citrix

- XenServer

**Note:** Neverfail supports any combination of physical/virtual servers.

## Application Plug-ins

- Exchange Server 2003 (32 bit), 2007 & 2010 (64 bit)
  - ForeFront for Exchange
  - Sophos PureMessage for Exchange
  - Trend ScanMail for Exchange
  - Symantec Mail Security for Exchange
  - McAfee GroupShield for Lotus Domino
  - McAfee GroupShield for Microsoft Exchange
  - Microsoft Antigen for Exchange
- SQL Server 2000, 2005 and 2008
- SharePoint Portal Server 2003 (32 bit)
  - Windows SharePoint Services v2.0 (WSS)
- SharePoint Server 2007 & 2010 (32 & 64bit)
  - Windows SharePoint Services v3.0 (WSS)
- IIS 6.0 (on Windows 2003) & IIS 7.0 (on Windows 2008)
- Windows Server 2003 R2 & 2008 R2
- Lotus Domino v6.5, v7.0, 8.0 & 8.5
- BlackBerry Enterprise Server v4.0, v4.1 & v5.0 (32 & 64 bit)
- Good Mobile Messaging
- RightFax Server v9.3 & v9.4 (32-bit)

Please call to discuss protecting custom/unlisted applications.



### North America

T: +1 512-327-5777  
 Email: info@us.neverfailgroup.com  
**UK & Europe**  
 T: +44 (0) 870 777 1500  
 Email: info@neverfailgroup.com  
**Benelux, France & Nordics**  
 T: + 31 294 237545  
 Email: info@neverfailgroup.com

### Central Europe

T: +49 (0)69 7593 8433  
 Email: info@neverfailgroup.com  
**Middle East & North Africa**  
 T: +971 4 360 2436  
 Email: mena@neverfailgroup.com  
**Asia Pacific & Japan**  
 T: +61 2 8448 8192  
 Email: apj.info@neverfailgroup.com

